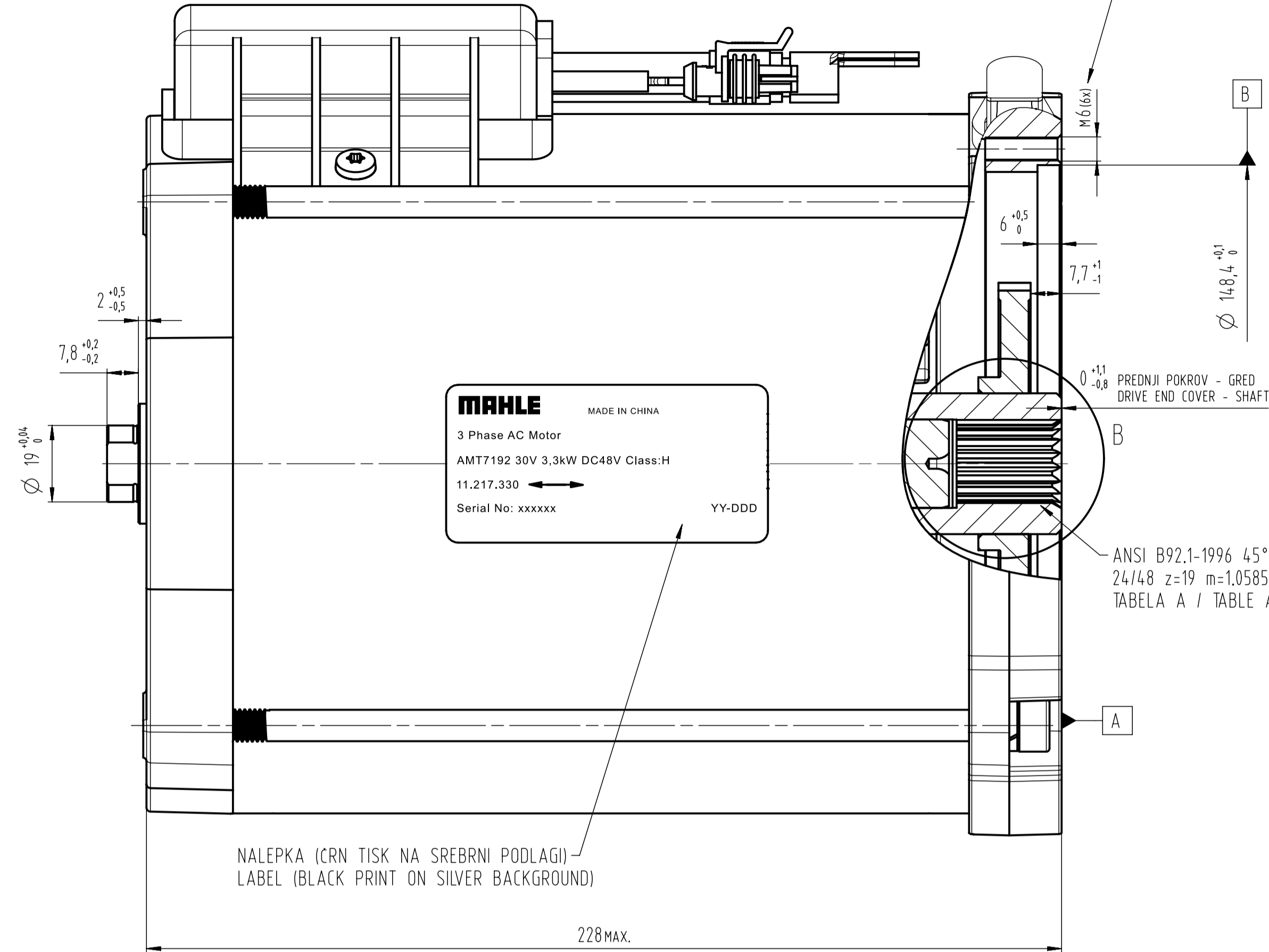
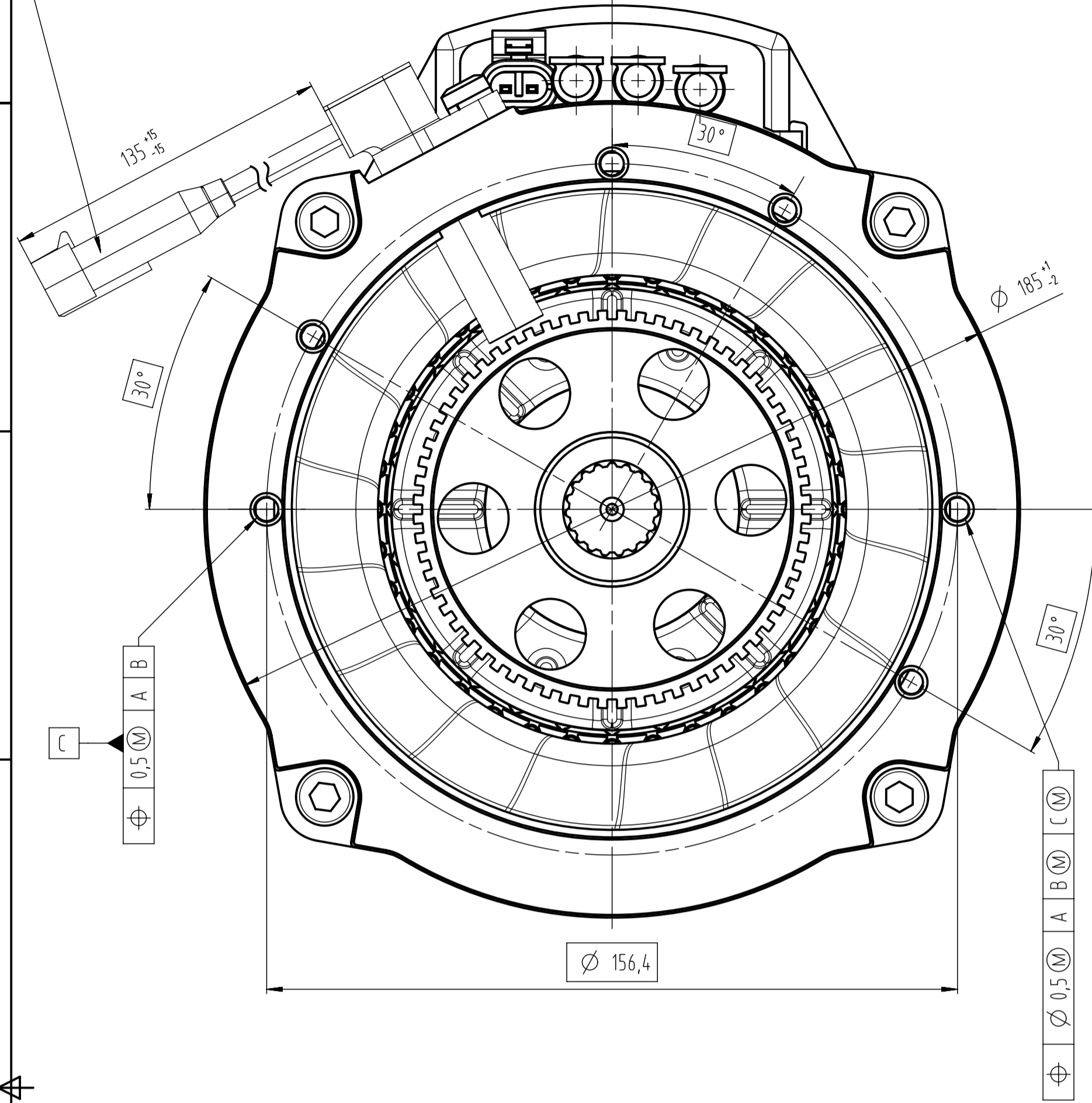
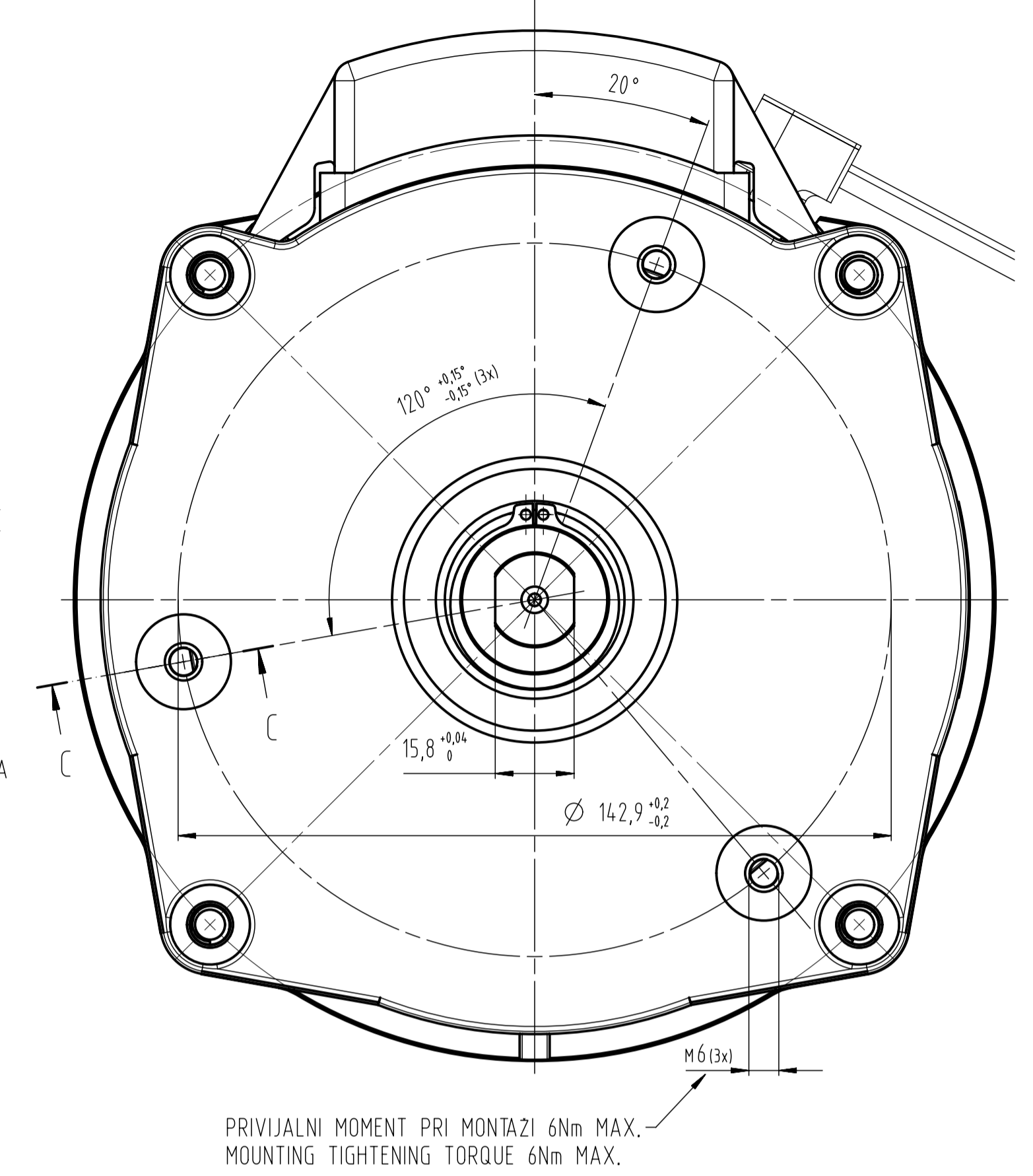


SMER VRTENJA / SHAFT ROTATION

KONEKTOR BRIZGAN NA VODNIK SENZORJA
JE PODOBEN AMP 4 PIN SUPERSEAL #282106-1
CONNECTOR MOLDED ON THE SENSOR CABLE IS
SIMILAR TO AMP 4 PIN SUPERSEAL #282106-1

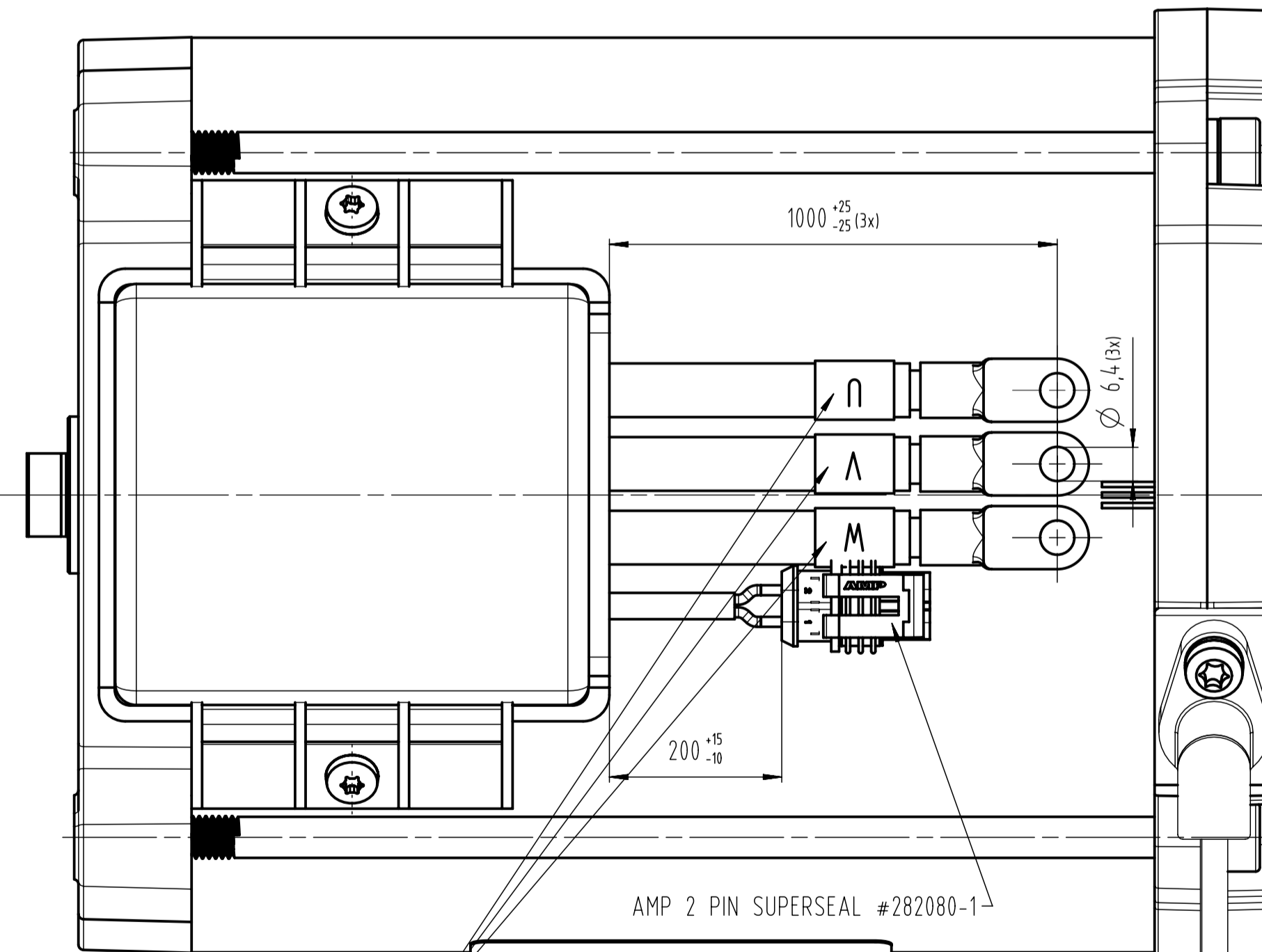


GLOBINA NAVOJA MIN.14
PRIVIJALNI MOMENT PRI MONTAZI 6Nm MAX.
THREAD DEPTH MIN.14
MOUNTING TIGHTENING TORQUE 6Nm MAX.



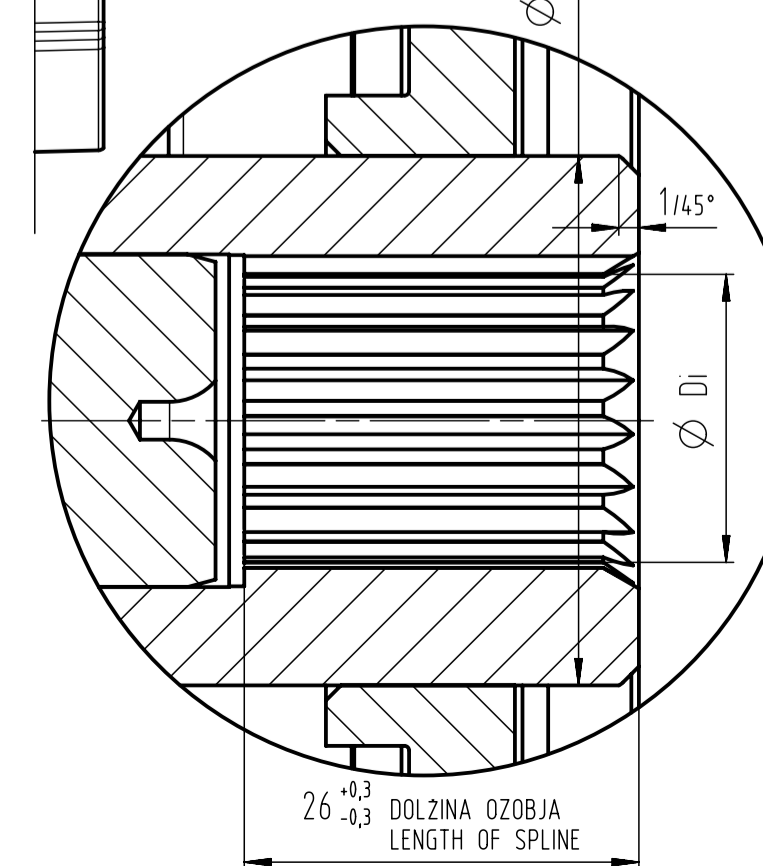
PRIVIJALNI MOMENT PRI MONTAZI 6Nm MAX.
MOUNTING TIGHTENING TORQUE 6Nm MAX.

NALEPKA (CRN TISK NA SREBRNI PODLAGI)
LABEL (BLACK PRINT ON SILVER BACKGROUND)



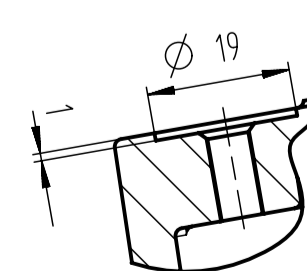
AMP 2 PIN SUPERSEAL #282080-1

DETALJ/DETAIL B
M 2:1



BARVNE OZNAKE VODNIKOV / COLOUR CABLE MARKINGS
W - MODRA / BLUE
V - RUMENA / YELLOW
U - ZELENA / GREEN

PREREZ/SECTION C-C



- OPOMBE:
- OZNAKE PRIKLJUCKOV PO PRIPOROČILU IEC PUBL. 34-8
 - SENZOR HITROSTI: 64 IMPULZOV / VRTLJAJ Z A IN B KANALOM
 - MOTOR USTREZA QA 11.920.415, KARAKTERISTIKA USTREZA TOČKI 19
 - KABELSKI ČEVLJI SO IZ POKOSITRANEGA ELEKTROLITSKEGA BAKRA EN10084
 - PRESEK MOČNOSTNIH KABLOV AWG4
 - NAJVEČJI DOVOLJEN NAVOR NA GREDI MOTORJA JE 80 Nm.
 - NAJVEČJA DOVOLJENA VRTILNA HITROST GREDI JE 6500 rpm.
 - KO TEMPERATURA NA TEMPERATURNEM SENZORJU DOSEŽE 140 °C, JE POTREBNO ZACETI Z OMEJEVANJEM IZHODNE MOČI MOTORJA, KO TEMPERATURA DOSEŽE 150 °C, JE POTREBNO MOTOR ZAUSTAVITI.

- NOTES:
- TERMINAL MARKS ACCORDING TO IEC PUBL. 34-8
 - SPEED SENSOR: 64 PULSES / REV WITH A AND B CHANNELS
 - MOTOR CORRESPONDS TO QA 11.920.415, CHARACTERISTIC CORRESPONDS TO POINT 19
 - TERMINAL: ELECTROLYTIC COPPER TERMINAL PER EN10084 WITH TIN COATING
 - POWER WIRES TO BE AWG4 FOR U,V AND W WIRES
 - MAX. ALLOWED TORQUE ON THE SHAFT 80 Nm.
 - MAX. ALLOWED ROTATIONAL SPEED OF THE ROTOR 6500 rpm.
 - WHEN TEMPERATURE ON TEMPERATURE SENSOR REACHES 140 °C BEGIN WITH THE MOTOR OUTPUT POWER REDUCTION AND WHEN IT REACHES 150 °C APPLY THE MOTOR SHUTDOWN.

CONNECTING INSTRUCTIONS FOR THERMOSENSOR PT1000
NAVODILA ZA PRIKLJUCITEV TEMPERATURNEGA SENZORJA PT1000

CONNECTOR AMP 2 PIN SUPERSEAL #282080-1

1	POLARITY OF CONNECTION 1 AND 2 ON AMP CONNECTOR IS NOT IMPORTANT
2	POLARITETA PRIKLJUCKOV 1 IN 2 NA AMP KONEKTORJU NI POMEMBNA

CONNECTING INSTRUCTIONS FOR SPEED SENSOR
NAVODILA ZA PRIKLJUCITEV SENZORJA HITROSTI

CONNECTOR SIMILAR TO AMP 4 PIN SUPERSEAL #282106-1

1	SUPPLY 4,5 - 24V DC
2	SIGNAL B
3	SIGNAL A
4	0 V (GROUND)

TABELA A TABLE A	OZOBJE JE V TOLERANCNEM RAZREDU 5 PO ANSI B92.1-1970 FILLET ROOT, SIDE FIT, TOLERANCE CLASS 5 ANSI B92.1-1970			
	VARIABLE	MAX.	MIN.	REF.
STEVILO ZOB	N	TEETH NUMBER		19
	PP _s	SPLINE PITCH		24/48
UBIRNI KOT	Φ	PRESSURE ANGLE		45°
MODUL	m	MODULE		1,058
OSNOVNI PREMER	D _b	BASE DIAMETER		14,216
DELILNI PREMER	D	PITCH DIAMETER		20,107
TEMENSKI PREMER	D _a	MAJOR DIAMETER	21,82	21,59
OBLIKOVNI PREMER	D _f	FORM DIAMETER	21,29	21,21
VZNOZNI PREMER	D _i	MINOR DIAMETER	19,61	19,48
DEJANSKA VRZEL MED ZOBMI	s	ACTUAL CIRCULAR SPACE WIDTH	1,941	-
EFEKTIVNA VRZEL MED ZOBMI	s _e	EFFECTIVE CIRCULAR SPACE WIDTH	-	1,875
MAX. MERA MED VALJCKI	M	MAX. MEASUREMENT BETWEEN PINS	-	17,054
PREMER VALJCKA	d	PIN DIAMETER	-	2,032

OPOMBE:
ODSTOPANJE NETOLERIRANIH DOLZINSKIH MER: ± 0,5
ODSTOPANJE NETOLERIRANIH KOTNIH MER: ± 30°

NOTES:
PERMISSIBLE DEVIATIONS OF UNTOLERATED DIMENSIONS: ± 0,5
PERMISSIBLE DEVIATIONS OF UNTOLERATED ANGULAR DIMENSIONS: ± 30°

11.217.330	AMT 7192	30V	3,3 kW		48V		60	NH 11.920.887	H	IP 54	CRNA / BLACK	26kg
MAHLE KODA MOTORJA	OZNAKA MOTORJA	NAPETOST MOTORJA	MOC MOTORJA	KODA KUPCA	NAPETOST NA VOZILU	VRTLJAJI	S2 (min) S3 (%)	ST. KARAKTERISTIKE	KLASA IZOLACIJE	ZASCITA	ZUNANJI IZGLJED	MASA
MAHLE REFERENCE No.	MAHLE MOTOR MARK	MOTOR VOLTAGE	MOTOR POWER	CUSTOMER CODE No.	TRUCK VOLTAGE	ROTATIONAL SPEED	NACIN DELOVANJA DUTY CYCLE	No. OF CHARACTERISTIC	INSULATION CLASS	PROTECTION GRADE	EXTERIOR	WEIGHT

DESIGNER / AVTOR	DATE / DATUM	NAME / IME	DOCUMENT TITLE / NAZIV DOKUMENTA	SCALE / MERILO
DRAWN / KONSTRUIRAL	RELEASED / ODOPRL	DESIGN CONTROL / KONTROLA KONSTR.	AC-BLPM	PR 01
<p>motor AMT7192 30V 3.3kW</p> <p>A-020137</p> <p>11217330</p>			<p>REVISION / REVIZIJA</p> <p>01</p>	<p>SHEET (SHEETS)</p> <p>1 (1)</p>